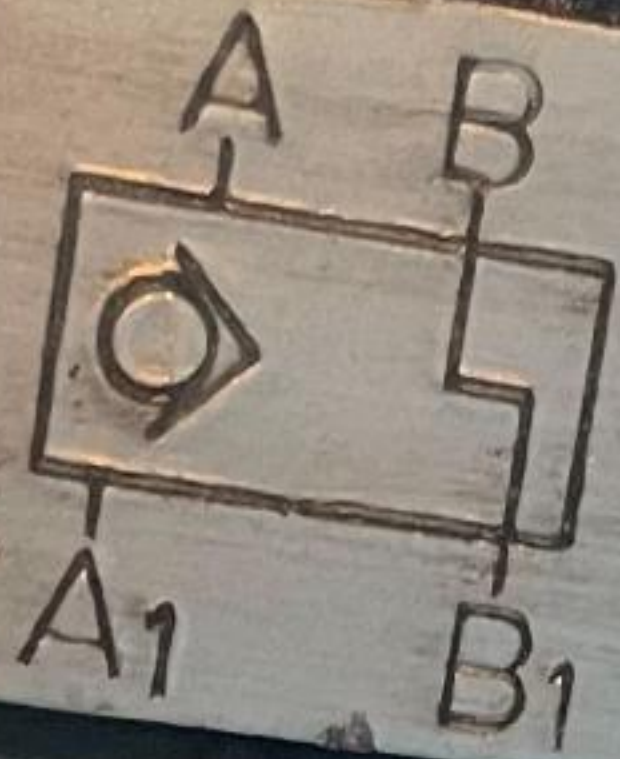


Z2S 10A 1-15 V

Ⓢ A2

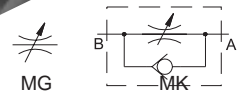
**HYDRO  
NORMA<sup>®</sup>**

made in West-Germany



41  
177

# MG THROTTLE VALVES/MK THROTTLE CHECK VALVES



MG/MK series throttle/throttle check valves mounted on the oil pipe lines directly. MG throttle valve is used to regulate flow by turning adjustment sleeve. MK throttle check valve is used to control flow in one direction and allow free flow in the opposite.

MG=Throttle valve MK=Throttle check valve

Size 6, 8, 10, 15, 20, 25, 30

G=Threaded connection

Series number

MG 10 G 1.2 / 2 / V \*

For further details

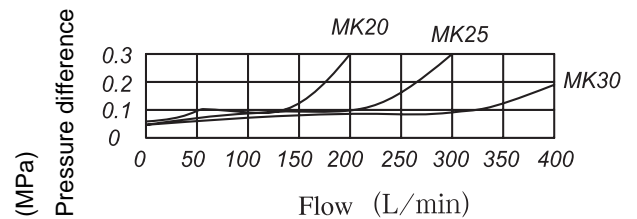
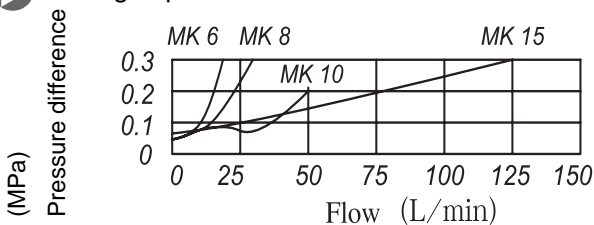
No code=NBR seals for petroleum oils  
V=FPM seals for phosphate ester

No code=Inch threaded; 2=Metric threaded

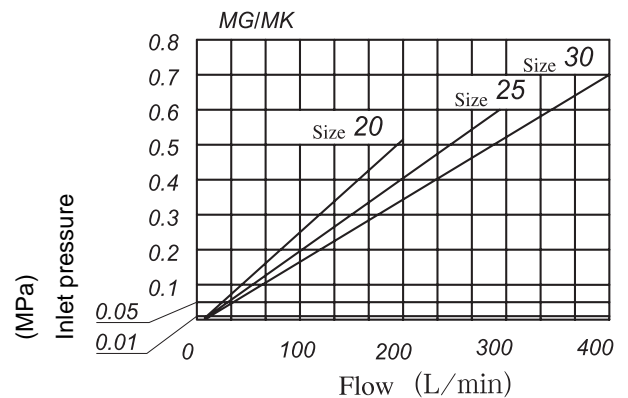
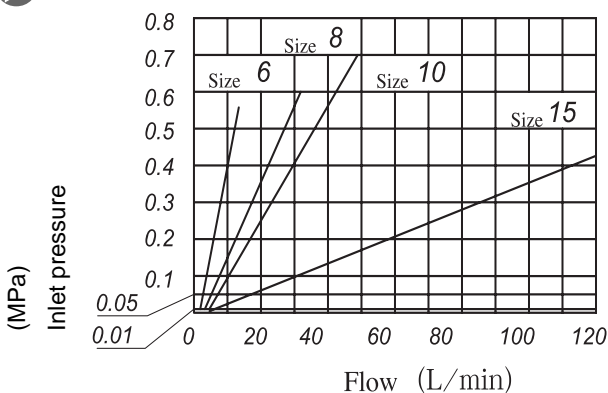
### Technical data


Size	6	8	10	15	20	25	30
Operating pressure (Mpa)	31.5	31.5	31.5	31.5	31.5	31.5	31.5
Flow rate (L/min.)	15	30	50	125	200	300	400
(Inch)	G1/4"	G3/8"	G1/2"	G3/4"	G1"	G11/4"	G1 1/2"
(Metric)	M14x1.5	M18x1.5	M22x1.5	M27x1.5	M33x1.5	M42x2	M48x2
Cracking pressure of check valve	0.05MPa						

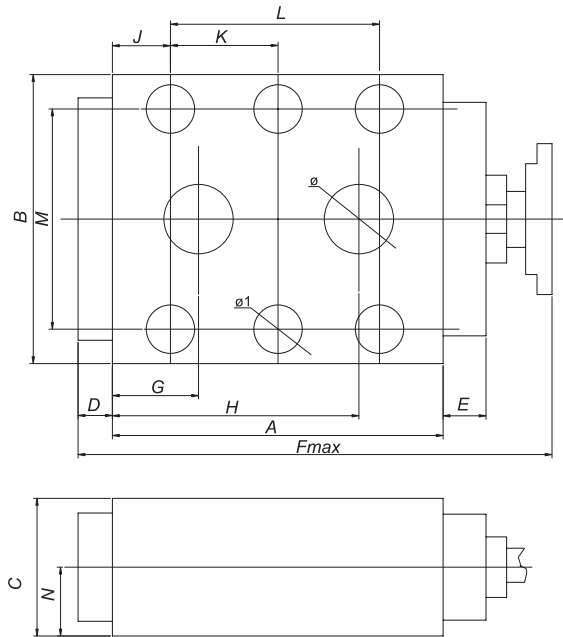
### Through open check valve curve



### Through open check valve curve



 MK\*P Subplate mounting

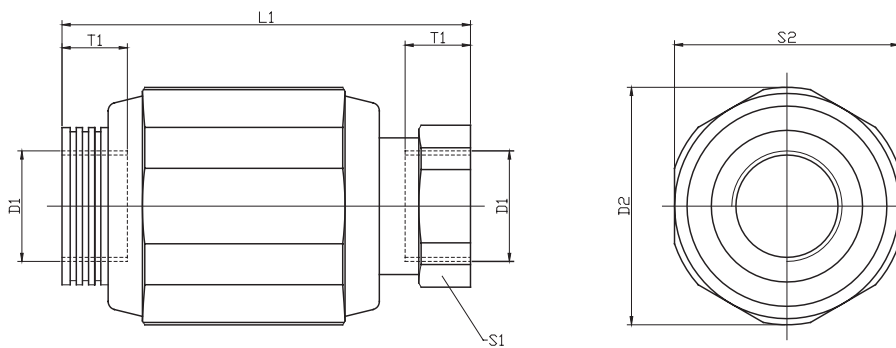


Technical data

Size	A	B	C	D	E	F <sub>max</sub>	G	H	J	L	M	K	Ø	Ø1
10	110	84	50	10	25	190	39	69	29	40	64	–	2-Ø10	4-Ø11
20	140	104	70	10	33	229	94	94	34	72	76	–	2-Ø20	4-Ø13
30	185	148	95	20	40	295	124	124	35	112	116	56	2-Ø30	6-Ø13

Technical data

 MG Drawing



size	D <sub>1</sub>		D <sub>2</sub>	L	1 S	2S	T	(kg)
	Metric	Inch						
6	M14x1.5	G1/4"	34	65	22	32	12	0.3
8	M18x1.5	G3/8"	38	65	24	36	12	0.4
10	M22x1.5	G1/2"	48	80	30	46	14	0.7
15	M27x2	G3/4"	58	100	41	55	16	1.1
20	M33x2	G1"	72	110	46	70	18	1.9
25	M42x2	G1 1/4"	87	130	55	85	20	3.2
30	M48x2	G1 1/2"	93	150	60	90	22	4.1